



LOBERO THEATRE

TECHNICAL SPECIFICATIONS

Updated July 26, 2025

SOUND SYSTEM

FOH mix positions are in booth or house center rear. Monitor mix position is stage left.

Live Music PA:

d&b flown L&R Line Array with:
5 – Yi8 per side
4 – V-SUB subs below the deck
4 – d&b E8 front fills
64 Channel analog split

Alternate PA:

4 – Martin WT3 tri-amped mains (2L, 2R)
2 – Danley Labs TH115 sub cabinets
4 – Martin WTUB front fills
1 – Martin MA 4.2 sub amp
2 – Lab Gruppen fp2600 amps (Low)
3 – Lab Gruppen fp2200 amps (mids, front fills)
2 – Lab Gruppen fp2200 amps (highs)

FOH Mix Desk:

Yamaha DM7
2 – Rio3224-D2 I/O Racks

Monitor System:

Yamaha DM7
2 – Rio3224-D2 I/O Racks
10 – Crest 7001 Amps
10 – Martin LE 12 Wedges

Microphones:

1 – Shure Beta 52
8 – Shure SM 57
8 – Shure SM 58
2 – Shure Beta 58
4 – Shure SM 81
3 – Sennheiser E604
4 – Shure Beta 98 D/S
1 – EV RE 20
2 – Sennheiser MD421 II
2 – AKG 414 TLII (matched stereo pair)
1 – AKG D112

2 – AKG 320B
2 – AKG 451 Condenser
3 – Crown PCC 160
4 – Shure ULXD4D Wireless receiver
4 – Shure ULXD body pack transmitters
4 – Shure ULXD2/58 handheld transmitters
3 – Shure U4D Wireless receiver
2 – Shure U2/58 UA handheld transmitters
3 – Shure U1UA body pack transmitters
Assorted DI's
Assorted Boom & Straight Stands

Playback:

1 – Apple Macbook Pro with QLab

IC, Monitor, & Paging Systems:

1 – Clearcom Freespeak II with multiple wired
and 5 wireless stations
1 – Page/Monitor Amplifier with speakers in
dressing rooms, greenroom and booth.
Program mic in ceiling, page mic stage right.

Company Disconnect:

80A-3 Ph. on Isolated Ground Transformer. Camlocks or Edison outlets stage left.

LIGHTING SYSTEM

- ETC Apex 10 Lighting Console
- 284 - 2.4 Kw Dimmers + 2 - 6.0Kw dimmers (Note: Some modules are Non-Dim Fixture Power)
- 400 Amp 3phase, 5 wire camlock Disconnect Panel (call for details).
- Rep plot including:
 - 20 Elation Fuze Max Profile
 - 20 Martin Mac Aura XB
 - 7 Chroma-Q Color Force II Plus (Cyc Lights)
 - 38 ETC Color Source Spot Deep Blue (Sidelights & Box Boom)
 - Various ETC Source Four fixtures lamped at 750w (Front Light, Side Light, and Specials)

Available Fixture Inventory Not Included In Rep Plot:

<u>Unit</u>	<u>Qty.</u>
19 deg. Source Four 750w	20
26 deg. Source Four 750w	9
36 deg. Source Four 750w	36
50 deg. Source Four 750w	6
Single-cell Orion 1k	20
Phoebus 1200w HMI Followspot	2

Circuit Distribution:

Booth – 10 ccts.
House Aisles – 3 ccts. per side
Box Booms – 6 ccts. per side
Front ports – 5 ccts. per each of four ports
Rear ports – 5 ccts. per each of four ports
First electric – 33 ccts.
Over stage – 112 ccts. in drop boxes
Fly Galleries – 12 ccts. per side
Proscenium – 8 ccts. per side
Floor Pockets – 16 ccts. per side
Basement – 3 ccts.

PROJECTION SYSTEMS

Barco DP2k-15C: 15,000 lumen Cinema Projector with 1.6 – 2.5 lens
Native display: 2048 x 1080 pixels
Barco PDS 9023G Switcher. HDMI & DVI inputs.

Panasonic PT-D10000U 10,000 lumen with 3.75 – 6.25 LE3 zoom lens
Native display: 1400 x 1050 pixels (SXGA+)
Maximum display: 1600 x 1200 pixels

Projection screen A: 13' – 6" high max, variable width, perforated with adjustable masking
Projection screen B: 9' – 0" high, 16' – 0" wide, fashfold

DRAPERIES/STAGE DRESSING

- 1 – Red velour, fully lined, bi-parting or guillotine Main Drape
- 1 – Red velour Main Teaser
- 6 – Sets of Black Velour Legs (28' high)
- 5 – Black Velour Borders (9'h x 40'w)
- 1 – Mid Stage Bi-Parting Black Velour Drape (28'h x 45'w)
- 1 – White Lino Cyc
- 1 – Black Sharkstooth Scrim (25'h x 55'w)
- 1 – Single panel full stage black (25'h x 55'w)

MISCELLANEOUS

Dressing Rooms: 3 Stage level, 4 Second floor, 2 Chorus, 1 Shower.

Orchestra Shell (ceiling and 13 panel back wall)

30 – Music Stands

30 – Music Stand Lights

60 – Orchestra Chairs

Steinway D 9' Concert Grand Piano

NOTE: Tuning, touching the wound bass strings, permanently marking the inside of the Piano, or striking any part of the instrument with anything is not permitted on the House Piano. Striking the keys with anything other than hands is not permitted. "Preparing" or placing foreign objects inside of the Piano may be permitted but must be cleared by the Lobero's house Technician at additional cost.

STAGE DIMENSIONS

Proscenium width -----	37' – 0"
Proscenium height -----	21' – 9"
Plaster line to back wall-----	35' – 3"
Plaster line to edge of apron at centerline-----	5' – 10"
Stage floor to fly floor-----	22' – 0"
Stage floor to loading bridge-----	54' – 0"
Stage floor to grid-----	62' – 6"
Stage right wall to stage left wall-----	73' – 0"
Booth wall to plaster line at center-----	64' – 0"
35mm projector film plane to plaster line-----	67' – 6"
Orchestra pit (6' below stage)-----	37'w x 10'd

SEATING CAPACITY	604 (see accessibility policies)
-------------------------	---

RIGGING CHART

ALL LINE SETS ARE 5 LINE COUNTERWEIGHT SETS WITH 52' BATTENS

NOTE: HI TRIM ON SETS 1-20 IS 60"; HI TRIM ON SETS 21-38 IS 50'

DIM. FROM			
SET #	PLASTER LINE	HOUSE HANG	NOTES
00	0' - 7"	Fire Curtain	Max. Load 150 lb.
1	1' - 4'	Main Teaser	
2	2' - 0"	Main Drape	
2A	2' - 4"	Spot Line Hemp Set	
3	2' - 9"	Legs 1	
4	3' - 9"	First Electric	Motorized
5	4' - 9"	Worklights	
6	5' - 9"	Orchestra Shell Ceiling	Motorized
7	6' - 9"		
8	7' - 6"	Legs 2	
9	8' - 3"	Border 1	
10	9' - 0"	Movie Screen A (23' x 41')	
11	9' - 9"		V: 13'-6" x 18' 35mm: 13'-6" x 25' 13 bricks
12	10' - 6"		
13	11' - 3"	Second Electric	
14	12' - 0"	Legs 3	
15	12' - 9"		
16	13' - 6"	Traveller	12 bricks (drape 6; track 6)
17	14' - 3"	Worklights	
18	15' - 0"		
19	15' - 9"	Border 2	
20	16' - 6"	Legs 4	
21	19' - 0"	Third Electric	22 ½ bricks
22	19' - 9"		
23	20' - 6"		
24	21' - 3"	Legs 5	
25	22' - 0"		
26	22' - 9"		15 bricks
27	23' - 6"	Border 3	
28	24' - 3"		
29	25' - 0"	Worklights	
30	25' - 9"	Fourth Electric	
31	26' - 6"	Legs 6	19 bricks
32	27' - 3"	Black Scrim (25' x 52')	
33	28' - 0"	Fifth Electric (LED's)	
34	28' - 9"		
35	29' - 6"		
36	30' - 3"		8 bricks
37	31' - 0"	Full Stage Black	
38	31' - 9"	Cyc	
	35' - 3"	BACKWALL	

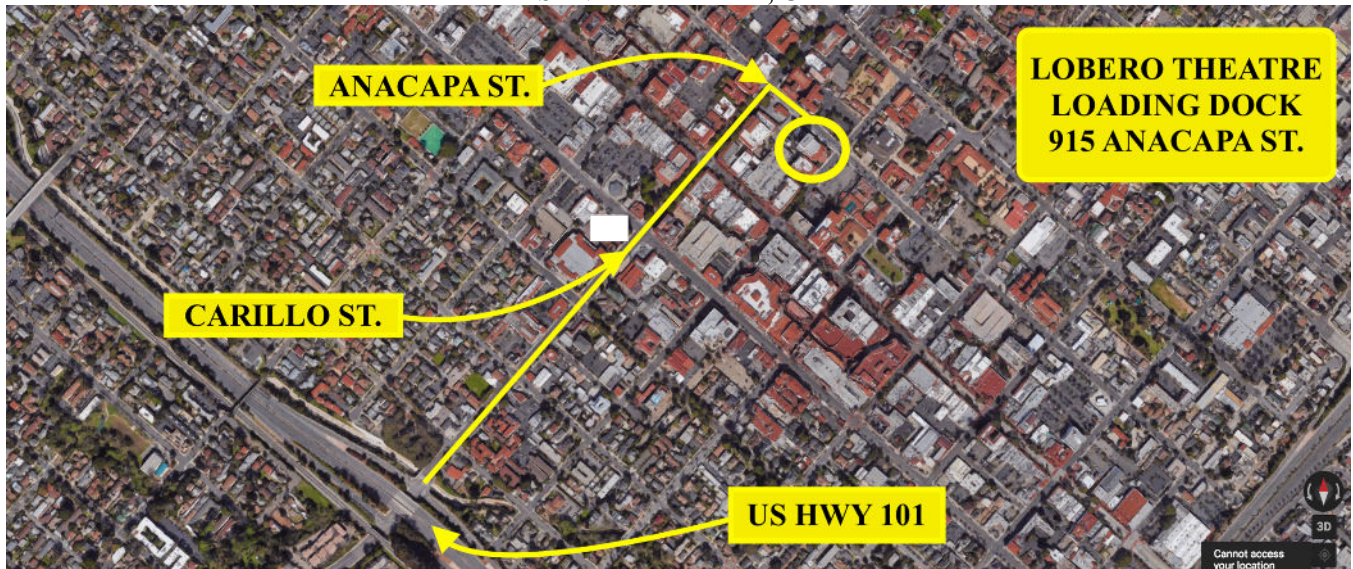
**LOBERO THEATRE
33 E. CANON PERDIDO ST.
SANTA BARBARA, CA**



**LOBERO THEATRE
33 E. CANON PERDIDO ST.
SANTA BARBARA, CA**



**LOBERO THEATRE
33 E. CANON PERDIDO ST.
SANTA BARBARA, CA**



Please park with the tail of your truck, bus, or trailer in line with the Loading Zone sign even if this means the nose of the vehicle overlaps the red curb.
Thank you!